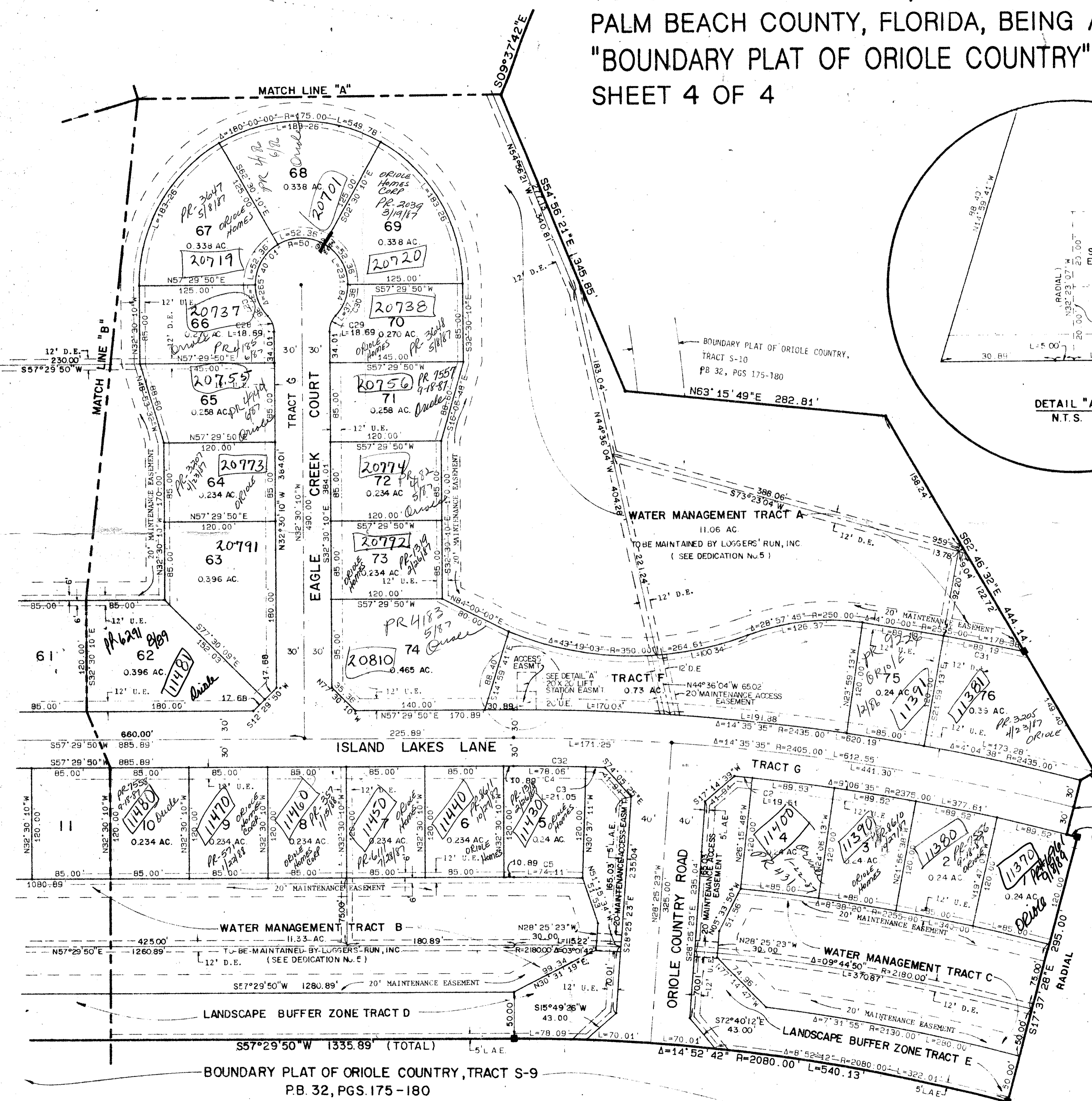
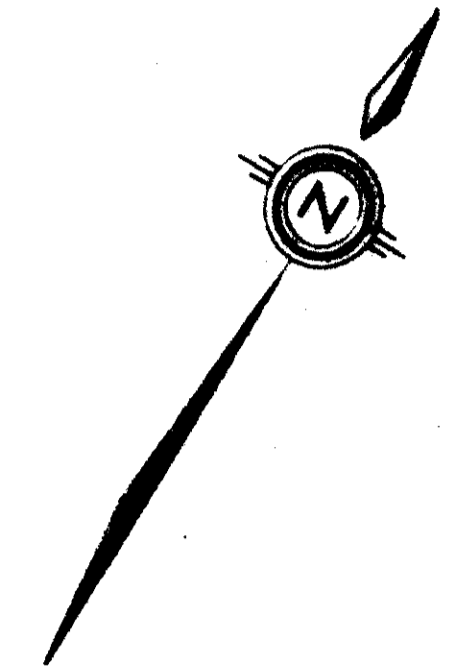
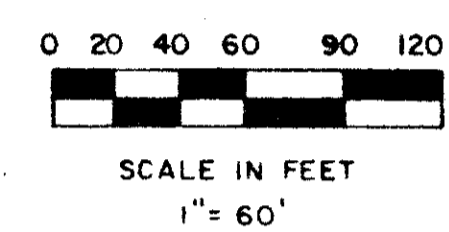
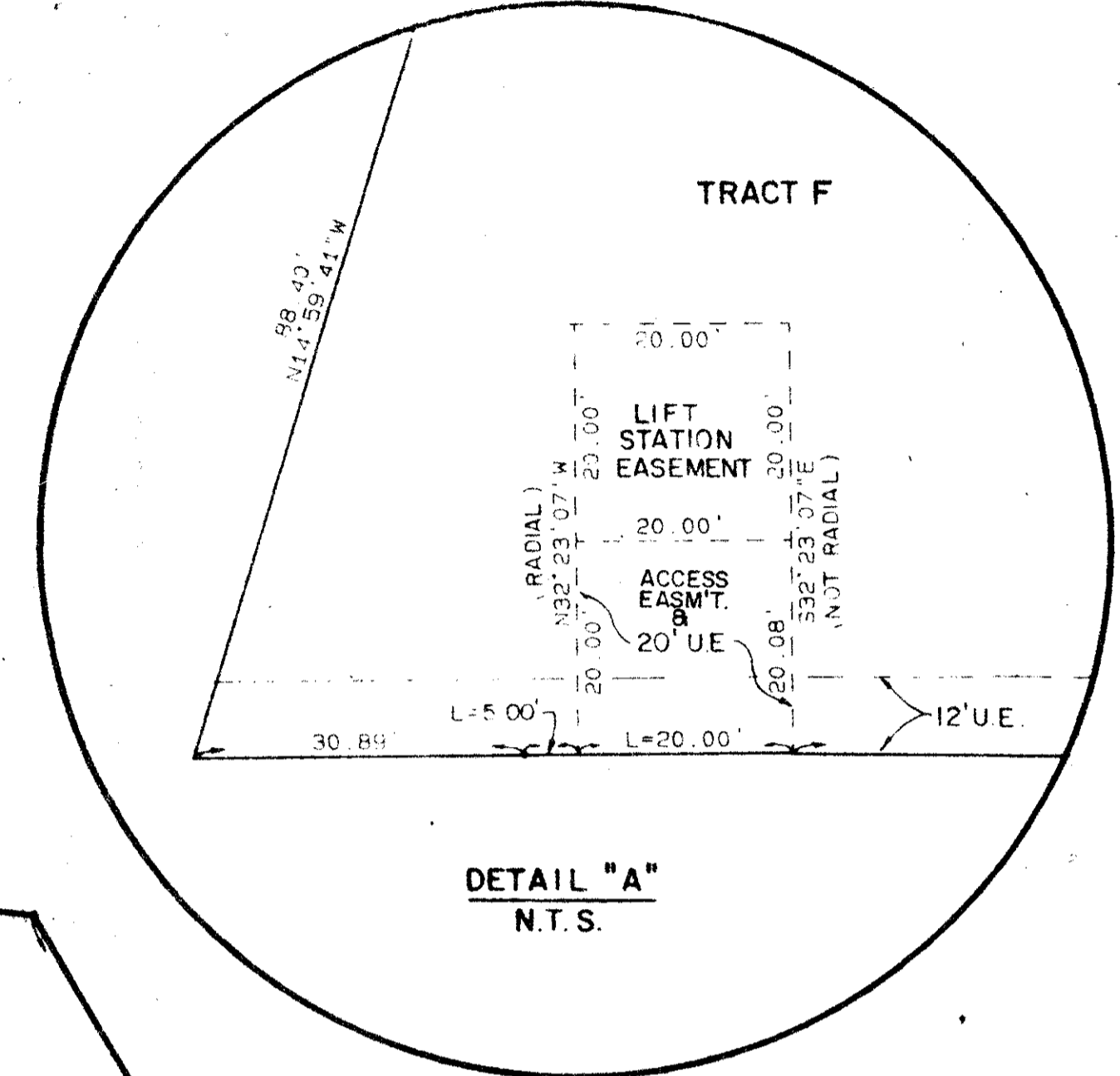
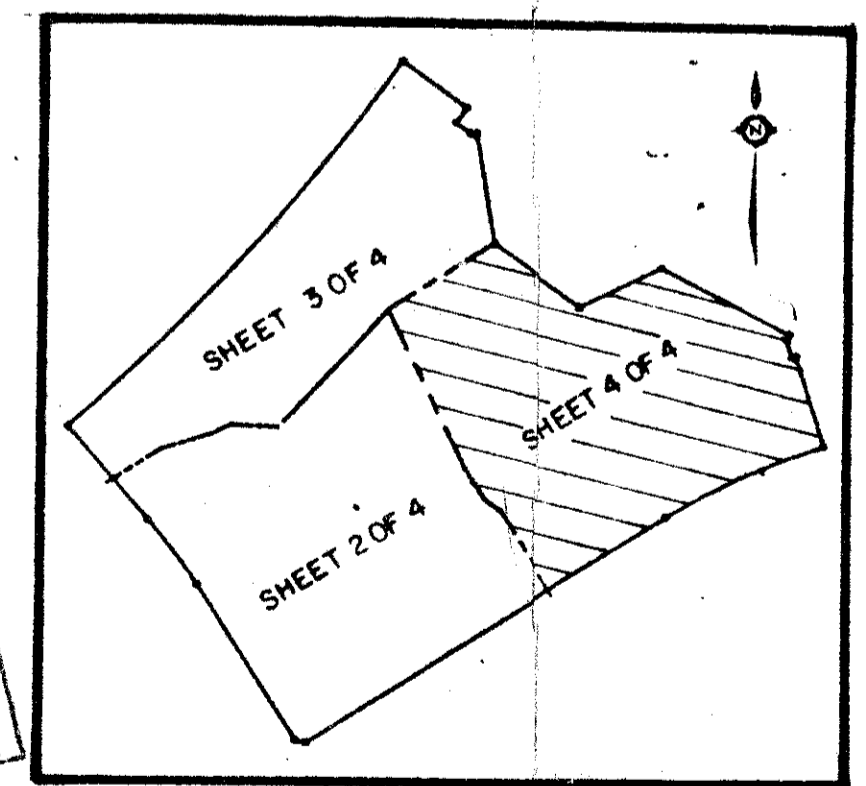


ISLAND LAKES SECTION ONE, PLAT ONE
PART OF LOGGERS' RUN, A P.U.D.
SITUATE IN SECTION 14, TOWNSHIP 47 SOUTH, RANGE 41 EAST,
PALM BEACH COUNTY, FLORIDA, BEING A REPLAT OF A PORTION OF
"BOUNDARY PLAT OF ORIOLE COUNTRY", (P.B. 32, PAGES 175-180).
SHEET 4 OF 4

STATE OF FLORIDA
COUNTY OF PALM BEACH
THIS PLAT WAS FILED FOR
RECORD AT _____ DAY OF _____
AD. 1986 AND DULY RECORDED
IN PLAT BOOK _____ ON PAGES
_____ AND _____
JOHN B. DUNKLE, CLERK
CIRCUIT COURT
BY: _____, D.C.



BOUNDARY PLAT OF ORIOLE COUNTRY, TRACT "V"
P.B. 32, PGS. 175-180



NO.	DELTA	RADIUS	LENGTH
C01	0° 17' 37"	2375.00	11.82
C02	0° 28' 15"	2375.00	19.51
C03	0° 30' 28"	2375.00	21.05
C04	1° 52' 59"	2375.00	78.08
C05	1° 52' 59"	2255.00	74.11
C06	1° 52' 59"	1800.00	60.00
C07	2° 03' 23"	1800.00	85.00
C08	6° 39' 16"	1800.00	20.91
C09	0° 44' 55"	1913.40	25.00
C10	0° 44' 55"	2033.40	26.57
C11	4° 46' 29"	1800.00	15.00
C12	1° 59' 07"	2033.40	70.46
C13	2° 34' 46"	1913.40	86.14
C14	28° 00' 41"	1800.00	88.00
C15	2° 03' 23"	1800.00	85.00
C16	0° 08' 46"	6708.45	17.10
C17	25° 16' 37"	1800.00	79.41
C18	0° 35' 00"	6888.45	70.13
C19	0° 42' 22"	6768.45	83.40
C20	1° 56' 24"	2093.40	70.88
C21	42° 33' 35"	1200.00	89.14
C22	1° 56' 24"	2213.40	74.94
C23	1° 13' 54"	2213.40	47.58
C24	1° 13' 54"	2093.40	48.00
C25	45° 00' 00"	1200.00	84.25
C26	45° 00' 00"	1200.00	94.25
C27	42° 50' 01"	50.00	37.38
C28	42° 50' 00"	25.00	18.69
C29	42° 50' 00"	25.00	18.69
C30	42° 50' 01"	50.00	38.38
C31	2° 00' 00"	2555.00	89.19
C32	2° 23' 27"	2375.00	99.10

ADD. BY TP
CHECKED BY BT

0275-003
ISLAND LAKES
Meridian Surveying and mapping inc.
WEST PALM BEACH, FLORIDA

DRAWN	M.E.H.	DATE	MAY, 1984
CHECKED		SCALE	1" = 60'
DRAWING NO.	84-P-004	ISLAND LAKES SECTION ONE, PLAT ONE	

DRAWING NUMBER

DRAWING NUMBER

DRAWING NUMBER

PLAN HOLD CORPORATION - IRVINE, CALIFORNIA
RECORDED BY NUMBER 07549